

Jawaharlar Nehru Technological University Anantapur  
Examinations Branch  
Timetable

**M.Tech - I Semester Regular & Supplementary Examinations April/May 2012**  
(for students admitted in 2009-10, 2010-11 & 2011-12 only)

Time: 10.00 AM to 1.00 PM

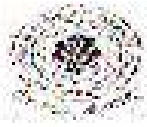
Date / Day	Electrical Power Engineering (EPE) & Electrical Power Systems (EPS)	Power Electronics and Electrical Drives (PE&ED) & Power Electronics (PE)	VLSI Systems (VLSIS), VLSI System Design (VLSISD), VLSI & VLSID
23.04.2012 Monday	Modern Control Theory 9D49101 (Common to EPE, EPS, PE&ED & PE)		VLSI Technology 9D57101 (Common to VLSIS, VLSISD, VLSI, VLSID & ES)
25.04.2012 Wednesday	Microprocessors & Microcontrollers 9D49102 (Common to EPE, EPS, PE&ED & PE)		Analog IC Design 9D57102
27.04.2012 Friday	Power System Control & Stability 9D49103	Principles of Machine Modeling Analysis 9D54103	Embedded Systems Concepts 9D57106a
30.04.2012 Monday	EHVAC Transmission 9D49104	Analysis of Power Electronic Converters 9D54104	Hardware Description Languages 9D57104
02.05.2012 Wednesday	Reactive Power Compensation & Management 9D49105	Power Electronic Control of DC Drives 9D54105	Hardware Software Co-design 9D57105
04.05.2012 Friday	Advanced Digital Signal Processing 9D49106a (Common to EPE, EPS, PE&ED & PE)		System Modeling & Simulation 9D57106b ASIC Design 9D57106c
07.05.2012 Monday	Neural Networks and Fuzzy Systems 9D49106b (Common to EPE, EPS, PE&ED & PE)		Digital IC Design 9D57103 (Common to VLSIS, VLSISD, VLSI & ES)

Date: 13-03-2012

Controller of Examinations i/c

13/3

Date / Day	Digital Systems and Computer Electronics (DSCE)	Digital Electronics & Communications Systems (DECS)	Embedded Systems
23.04.2012 Monday	Digital System Design 9D06101 (Common to DSCE & DECS)		VLSI Technology 9D57101 (Common to VLSIS, VLSISD, VLSI, VLSID & ES)
25.04.2012 Wednesday	Embedded System Concepts 9D06102 (Common to DSCE, DECS, & ES)		
27.04.2012 Friday	Advanced Computer Architecture 9D06103 (Common to DSCE, DECS, & ES)		
30.04.2012 Monday	Advanced Data Communications 9D06104	Digital Communication Techniques 9D38104	Micro Controllers & Interfacing 9D55104
02.05.2012 Wednesday	Neural Networks & Applications 9D06105	Adaptive Signal Processing 9D38105	Operating Systems 9D55105
04.05.2012 Friday	DSP Processors & Architectures 9D06106a (Common to DSCE & DECS)		Advanced DSP Applications 9D55101
	Lower Power VLSI Design 9D06106c (Common to DSCE & DECS)		
07.05.2012 Monday	Network Security & Cryptography 9D06106c	Advanced Digital Signal Processing 9D38103	Digital IC Design 9D57103 (Common to VLSIS, VLSISD, VLSI & ES) Algorithms for VLSI Design Automation 9D55106c



**Jawaharlal Nehru Technological University Anantapur**  
**Examinations Branch**  
**Timetable**

**M.Tech - I Semester Regular & Supplementary Examinations April/May 2012**  
 (for students admitted in 2009-10, 2010-11 & 2011-12 only)

Time: 10.00 AM to 1.00 PM

Date / Day	Computer Science and Engineering (CSE) & Computer Science (CS)	Software Engineering (SE)	Machine Design (MD)	CAD/CAM
23.04.2012 Monday	Advanced Data Structures & Algorithms 9D58101 (Common to CSE, CS, SE & CN)		Computational Methods 9D85101 (Common to MD, CAD/CAM and R&AC)	
25.04.2012 Wednesday	Discrete Structures 9D58102	Advanced Software Engineering 9D25102	Advanced Mechanisms 9D15102	Finite Element Methods 9D04102
27.04.2012 Friday	Computer System Design 9D58103	Software Requirements & Estimation 9D25103	Advanced Mechanics of Solids 9D15103	Computer Integrated Manufacturing 9D04103
30.04.2012 Monday	Java & Web Technologies 9D58104	Software Metrics 9D25104	Fracture, Fatigue & Creep Deformation 9D15104	Geometric Modeling 9D04104
02.05.2012 Wednesday	Software Engineering 9D58105	Middleware Technologies 9D25105	Materials Technology 9D15105	Advances in Manufacturing Technology 9D04105
04.05.2012 Friday	Advances in Databases 9D58106a	Object Oriented Modeling 9D25106a	Tribology 9D15106a	Quality Engineering & Manufacturing 9D04106a
	Distributed Databases 9D58106b	Software Project Management 9D25106b	Sear Engineering 9D15106b	Computer Aided Process Planning 9D04106b
	Computer Vision 9D58106c	Software Process Management 9D25106c	Non Destructive Evaluation 9D15106c	Design for Manufacturing 9D04106c

Date: 18-03-2012

Controller of Examinations  
 In-charge

3/3

**Jawaharlal Nehru Technological University Anantapur**  
**Examinations Branch**  
**Timetable**

**M.Tech - I Semester Regular & Supplementary Examinations April/May 2012**  
 (for students admitted in 2009-10, 2010-11 & 2011-12 only)

Time: 10.00 AM to 1.00 PM

Date / Day	Regular & Supplementary			Regular only
	Computer Networks (CN)	Communication Systems (CS)	Geotechnical Engineering (GE)	Refrigeration & Air Conditioning (R&AC)
23.04.2012 Monday	Advanced Data Structures & Algorithms 9D56101 (Common to CSE, CS, SE & CN)	Advanced Mathematics for Communication Systems 9D61101	Advanced Soil Mechanics 9D12101	Computational Methods 9D65101 (Common to MD, CAD/CAM and R&AC) Maintenance & Reliability 9D17106 Object Oriented Programming Through C 9D17107
25.04.2012 Wednesday	Advanced Computer Networks 9D56203	Modern Digital Communication Techniques 9D61102	Theoretical Soil Mechanics 9D12102	Advanced Thermodynamics 9D17101
27.04.2012 Friday	Distributed Systems 9D58204	Detection & Estimation of Signals 9D38205	Numerical Methods 9D32103	Conduction & radiation Heat Transfer 9D17102
30.04.2012 Monday	Network Management Systems 9D08103	Computer Communication Networks 9D61103	Shallow Foundations 9D12104	Refrigeration 9D17103
02.05.2012 Wednesday	Protocol Software Engineering 9D08104	Information & Coding Techniques 9D61104	Geo-Technical Earth Quake Engineering 9D12105a Geographical Information systems 9D12105b	Air Conditioning - I 9D1704
04.05.2012 Friday	Performance Evaluation of Computer Networks 9D08105a	Digital Voice & Picture Communication 9D61105a	Geo-Environmental Engineering 9D12105a	Advanced Fluid Mechanics 9D17105
	Grid Computing 9D08105b	Mobile Ad-hoc Networks 9D08202	Soil Dynamics & Machine Foundations 9D12105b	
	Secure Software Engineering 9D25206a	Radar Signal Processing 9D61105b		

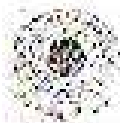
- NOTE: 1. Any omissions / omissions in this time-table may be brought to the notice of the undersigned immediately.  
 2. If the Government declares holiday on any of the above dates, the examinations will be conducted as usual.

Date: 13-03-2012

Controller of Examinations i/c

24

4/13



**Jawaharlal Nehru Technological University Anantapur**  
**Examinations Branch**  
**Timetable**

**M.Tech - II Semester Supplementary Examinations April/May 2012**  
 (for students admitted in 2009-10 & 2010-11 only)

Time: 10.00 AM to 1.00 PM

Date / Day	Electrical Power Engineering (EPE) & Electrical Power Systems (EPS)	Power Electronics and Electrical Drives (PE&ED) & Power Electronics (PE)	VLSI Systems (VLSIS), VLSI System Design (VLSISD), VLSI & VLSID
24.04.2012 Tuesday	Flexible AC Transmission Systems 9D49201 (Common to EPE, EPS, PE&ED & PE)		Testing & Testability 9D55201 (Common to VLSIS, VLSISD, VLSI, VLSID & ES)
26.04.2012 Thursday	HVDC Transmission 9D49202 (Common to EPE, EPS, PE&ED & PE)		Low Power VLSI Design 9D57202
28.04.2012 Saturday	Operation & Control of Power System 9D49203	Power Electronic Control of AC Drives 9D54203	Algorithms for VLSI Design Automation 9D57203
01.05.2012 Tuesday	Advanced Power System Protection 9D49204	Advanced Power Semiconductor Devices & Protection 9D54204	FPGA Architectures & Applications 9D55204
03.05.2012 Thursday	Energy Conversion Systems 9D49205	Modern Power Electronics 9D54205	Scripting Language for VLSI Design Automation 9D57205
05.05.2012 Saturday	Programmable Logic Controllers 9D49206a (Common to EPE, EPS, PE&ED & PE)		Nano Electronics 9D57206a
	Energy Auditing, Conservation & Management 9D49206b (Common to EPE, EPS, PE&ED & PE)		Cryptography & Network Security 9D57206b
			Real Time Operating Systems 9D57206c



**Jawaharlal Nehru Technological University Anantapur**  
**Examinations Branch**  
**Timetable**

**M.Tech - II Semester Supplementary Examinations April/May 2012**  
 (for students admitted in 2009-10 & 2010-11 only)

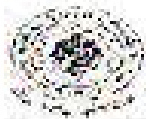
Time: 10.00 AM to 1.00 PM

Date / Day	Digital Systems and Computer Electronics (DSCE)	Digital Electronics & Communications Systems (DECS)	Embedded Systems (ES)
24.04.2012 Tuesday	Micro Computer System Design 9D06201 (Common to DSCE & DECS)		Testing & Testability 9D55201 (Common to VLSI, VLSIb, VLSI, VLSI D & ES)
26.04.2012 Thursday	Hi-speed Networks 9D06202 (Common to DSCE & DECS)		
28.04.2012 Saturday	Design of Fault Tolerant Systems 9D06203	Wireless Communications 9D38203	Real Time Operating Systems 9D55202
01.05.2012 Tuesday	Systems Programming 9D06204	Coding Theory & Techniques 9D38204	Hardware Software Co-design 9D55203
03.05.2012 Thursday	Image & Video Processing 9D06205/9D06205a (Common to DSCE & DECS)		FPGA Architecture & Applications 9D55204
	Optical Communications 9D38206b Compression Techniques 9D38206c		
05.05.2012 Saturday	System Modeling & Simulation 9D06206a	Detection & Estimation of Signals 9D38205	Cryptography & Network Security 9D55205
	Algorithms for VLSI Design Automation 9D06206b		Radio Frequency Identification 9D55206c
	FPGA Architecture & Applications 9D06206c		Micro Electro-mechanical Systems 9D55206b
			Expert Systems 9D55206c

Date: 13-03-2012

E. J.   
 Controller of Examinations I/c

9/12



Jawaharlu Nehru Technological University Anantapur

Examinations Branch

Timetable

M.Tech - II Semester Supplementary Examinations April/May 2012

(for students admitted in 2009-10 & 2010-11 only)

Time: 10.00 AM to 1.00 PM

Date / Day	Computer Science and Engineering (CSE) & Computer Science (CS)	Software Engineering (SE)	Machine Design (MD)	CAD/CAM
24.04.2012 Tuesday	Software Quality Assurance & Testing 9D58201 (Common to CSE, CS & SE)		Advanced Optimization Techniques 9D04201 (Common to MD and CAD/CAM)	
26.04.2012 Thursday	Object Oriented Analysis & Design 9D58202	Software Architecture & Design Patterns 9D25202	Robotics 9D04202 (Common to MD and CAD/CAM)	
28.04.2012 Saturday	Advanced Computer Networks 9D58203	Service Oriented Architecture 9D25203	Mechanical Vibrations 9D15203	Computer Graphics 9D04203
01.05.2012 Tuesday	Distributed Systems 9D58204	Software Reliability 9D25204	Experimental Stress Analysis 9D15204	CNC Technology & Programming 9D04204
03.05.2012 Thursday	Data Warehousing & Mining 9D58205	Software Reengineering 9D25205	Theory of Plasticity 9D15205	Mechanics 9D04205
05.05.2012 Saturday	Software Architecture 9D58206a	Secure Software Engineering 9D25206a	Design for Manufacturing 9D15206a	Rapid Prototyping 9D04206a
	Software Design 9D58206b	Soft Computing 9D25206b	Pressure Vessel Design 9D15206b	Artificial Intelligence & Expert Systems 9D04206b
	Design Patterns 9D58206c	Model Driven Software Development 9D25206c	Mechanics of Composite Materials 9D15206c	Mechanics & Manufacturing methods of Composites 9D04206c

- NOTE: 1. Any clashes / omissions in this time-table may be brought to the notice of the under signed immediately.  
2. If the Government declares holiday on any of the above dates, the examinations will be conducted as usual.

Date: 13-03-2012

Controller of Examinations /c